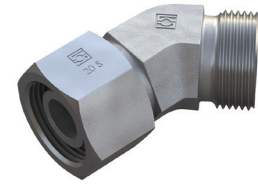
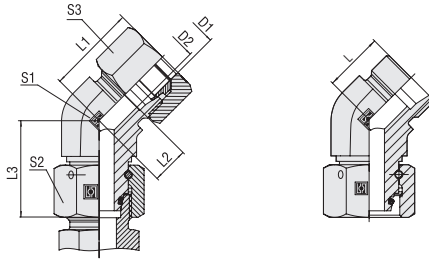


**Adjustable Elbow (45°) with 24° Taper / O-Ring
Type FI-EVD • Series L / S**


Series	Tube OD	PN	Dimensions									Weight (*9)/lbs) ca. per 100 ²	Ordering Codes ³
	(mm/in)		(mm/in)	L	L ¹	L ²	L ³	S1	S2	S3			
L	6	500	4	16	24	9	26	14	14	14	4,63	FI-EVD-06L-B-W3-DKO	
	.24	7250	.16	.63	.94	.35	1.02	.55	.55	.55	10.19		
	8	500	6	19	27	12	27,5	14	17	17	4,72	FI-EVD-08L-B-W3-DKO	
	.31	7250	.24	.75	1.06	.47	1.08	.55	.67	.67	10.37		
	10	500	8	19	27	12	29	19	19	19	7,56	FI-EVD-10L-B-W3-DKO	
	.39	7250	.31	.75	1.06	.47	1.14	.75	.75	.75	16.63		
	12	400	10	21	29	14	29,5	19	22	22	8,66	FI-EVD-12L-B-W3-DKO	
	.47	5800	.39	.83	1.14	.55	1.16	.75	.87	.87	19.06		
	15	400	12	24	32	17	32,5	22	27	27	12,96	FI-EVD-15L-B-W3-DKO	
	.59	5800	.47	.94	1.26	.67	1.28	.87	1.06	1.06	28.52		
	18	400	15	24	33	17	35,5	27	32	32	20,64	FI-EVD-18L-B-W3-DKO	
	.71	5800	.59	.94	1.30	.67	1.40	1.06	1.26	1.26	45.42		
	22	400	19	26	35	19	38,5	30	36	36	26,41	FI-EVD-22L-B-W3-DKO	
	.87	5800	.75	1.02	1.38	.75	1.52	1.18	1.42	1.42	58.11		
	28	250	24	30,5	40	23	41,5	36	41	41	34,69	FI-EVD-28L-B-W3-DKO	
	1.10	3625	.94	1.20	1.57	.91	1.63	1.42	1.61	1.61	76.32		
	35	250	30	37	48	27	51	50	50	50	79,60	FI-EVD-35L-B-W3-DKO	
	1.38	3625	1.18	1.46	1.89	1.06	2.01	1.97	1.97	1.97	175.12		
42	250	36	37	49	26	56	50	60	60	83,20	FI-EVD-42L-B-W3-DKO		
1.65	3625	1.42	1.46	1.93	1.02	2.20	1.97	2.36	2.36	183.04			
S	6	800	4	16	24	9	27	14	17	17	4,90	FI-EVD-06S-B-W3-DKO	
	.24	11600	.16	.63	.94	.35	1.06	.55	.67	.67	10.77		
	8	800	5	19	27	12	27,5	19	19	19	5,17	FI-EVD-08S-B-W3-DKO	
	.31	11600	.20	.75	1.06	.47	1.08	.75	.75	.75	11.37		
	10	800	7	21	30	13	30	19	22	22	9,44	FI-EVD-10S-B-W3-DKO	
	.39	11600	.28	.83	1.18	.51	1.18	.75	.87	.87	20.76		
	12	630	8	24	33	17	31	19	24	24	12,90	FI-EVD-12S-B-W3-DKO	
	.47	9135	.31	.94	1.30	.67	1.22	.75	.94	.94	28.38		
	16	630	12	24	34	16	36,5	19	30	30	16,76	FI-EVD-16S-B-W3-DKO	
	.63	9135	.47	.94	1.34	.63	1.44	.75	1.18	1.18	36.87		
	20	400	16	26,5	37,5	16	44,5	27	36	36	30,72	FI-EVD-20S-B-W3-DKO	
	.79	5800	.63	1.04	1.48	.63	1.75	1.06	1.42	1.42	67.58		
	25	400	20	30,5	42,5	19	50	36	46	46	50,10	FI-EVD-25S-B-W3-DKO	
	.98	5800	.79	1.20	1.67	.75	1.97	1.42	1.81	1.81	110.22		
	30	400	25	37	50	24	55	50	50	50	92,90	FI-EVD-30S-B-W3-DKO	
1.18	5800	.98	1.46	1.97	.94	2.17	1.97	1.97	1.97	204.38			
38	400	32	37	52	21	63	50	60	60	98,50	FI-EVD-38S-B-W3-DKO		
1.50	5800	1.26	1.46	2.05	.83	2.48	1.97	2.36	2.36	216.70			

¹ Approximate dimension in assembled condition.

² Weight excluding cutting ring and union nut.

³ Standard scope of delivery: Fitting body only.

Standard seal material is NBR (Buna-N®).








Typical application with a
Straight Male Stud Fitting FI-GE-...


Ordering Codes
***FI-EVD*-10*L*-B*-W3*-DKO*-MS**

- * Adjustable Elbow (45°) with 24° Taper / O-Ring (DKO) FI-EVD
 - * Outside Tube Diameter D1 (in mm) -10
 - * Series L
S
 - Light Series
 - Heavy Series
 - * Seal Material -B
-V
-E
 - NBR (Buna-N®)
 - FKM (Viton®)
 - EPDM
 - * Material Code -W3
 - Steel, zinc/nickel-plated
- Please contact STAUFF for alternative materials and surface finishings.
- * Assembling / Kitting -DKO
-MS
-MSV
 - Fitting body supplied with swivel nut and O-ring
 - Fitting body supplied with cutting ring and union nut
 - Fitting body supplied with soft-sealing cutting ring and union nut

Connecting Parts

-  Cutting Ring
Type **FI-DS**
-  Soft-Sealing Cutting Ring
Type **FI-WDDS**
-  Support Sleeve
Type **FI-VH**
-  STAUFF Form Ring
Type **FI-AR**
-  Union Nut
Type **FI-M**
-  37° Flared Tube Fitting Set
Type **FI-AB**

Spare Parts / Accessories

-  O-Ring
Type **O-RING**